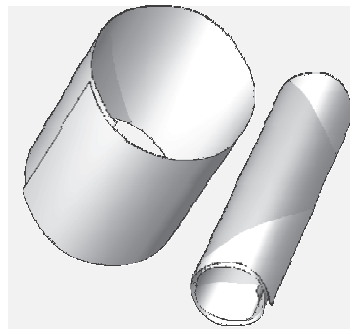
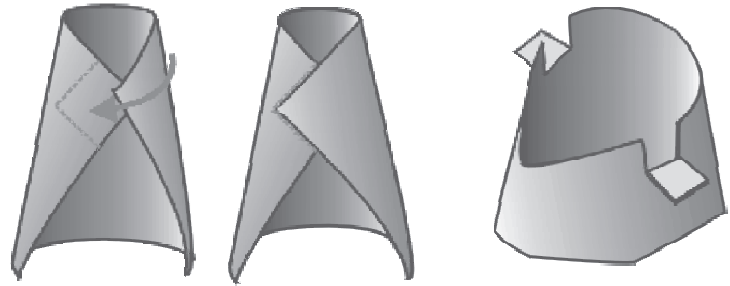


The body is made from one A5 sheet of thin card - coloured copy-card is perfect.

Draw a 4cm square in one corner of the card, *small card squares that can be drawn around are a great help for younger children*. Curve the card until you can lay the opposite top corner in the drawn 'corner'. Try it without glue first, then glue, (glue-stick?).

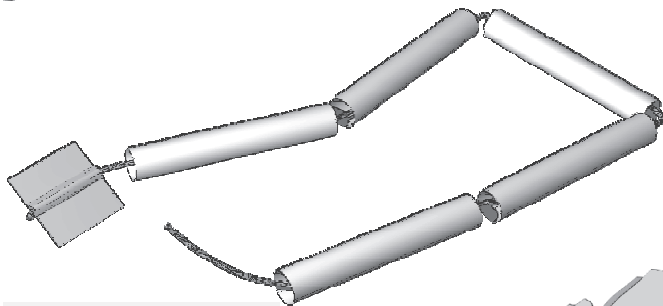
When the glue is set make two pairs of cuts, one pair each side, to take the shoulder straw. Fold out the tabs so formed - as shown.



The head and neck are each made from an A7 sheet of thin card or thick paper. Curve the rectangle around to form a cylinder for the head, overlapping no more than 1cm. - glue.

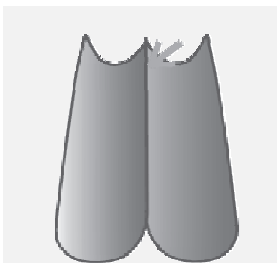
Roll the other rectangle around a pen or pencil to make a thinner cylinder for the neck - glue.

One third of the neck is glued inside the back of the head and one third is glued inside the back of the body.

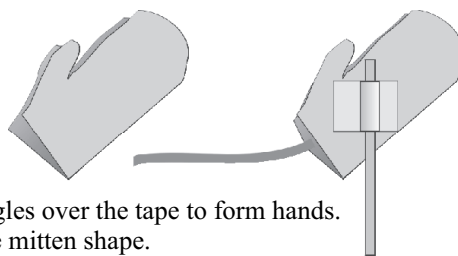


Cut a jumbo artstraw into five roughly equal parts - they will be approx. 8cm long. Take a length of thin string and fold a small piece of masking tape over one end. Thread the straw pieces onto the string then apply a second bit of tape about 1cm past the end of the last straw. Cut off any surplus string. These are the arms.

Glue the centre straw (the shoulders) to the tabs on the body.



If you want 'legs' you can create the illusion of trousers by folding another A5 card in half and curving the sides. Glue just the top corners into the body. This will leave a large empty 'tummy' space but don't worry - the viewer's eye will fill in the space!



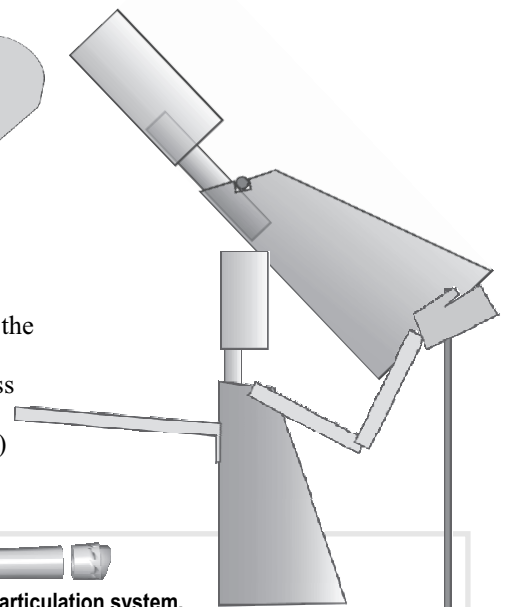
Fold card rectangles over the tape to form hands. Cut into a simple mitten shape.

Assemble all the puppet parts - add features etc. then fit the controls.

Only one arm is operated. Tape a thin stick or wire across the palm of one hand.

(A cane kebab skewer is fine but cut off the sharp point.)

A short length of artstraw glued 'between the shoulder blades' will serve as a handle.



BAMBOO CANE



You could make a more substantial puppet and still use the same articulation system.

Replace the artstraw of the arms with any stiff tube of an appropriate size.

Plastic straws - old felt pen bodies - card fax-roll middles - or even lengths of bamboo cane. If you use the latter then take sections of cane from between the nodes - then they will be hollow right through.