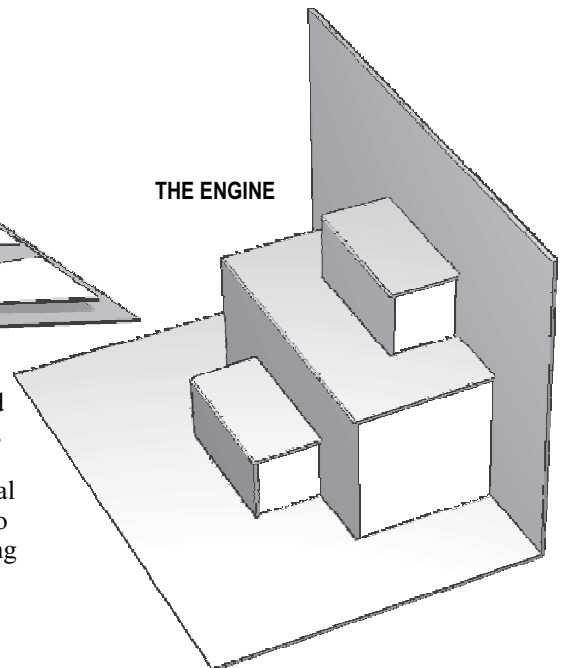


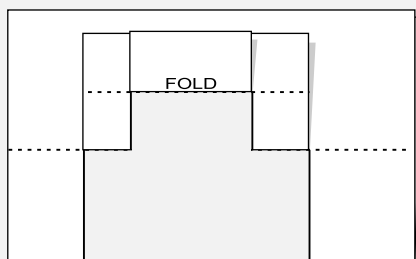
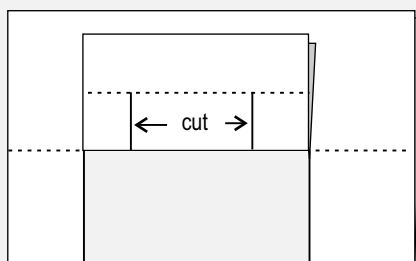
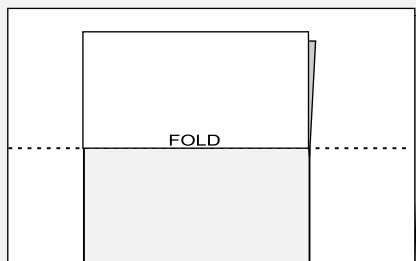
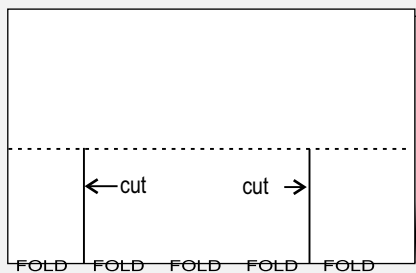
Pop-up cards are always popular and this straightforward system allows impressive looking versions to be made without too much difficulty.



THE ENGINE

Looking at commercially produced pop up cards might be a good idea, but trying to copy them is not. Relying as they do on many internal cuts of complicated shapes, they do not offer helpful guidance for young card designers.

This system uses a universal 'engine' to drive the 'popping-up'.



- Begin with an A6 sheet of thin card. Fold it carefully into two. Press the fold down firmly, then reverse it, ie. fold it back the other way and press again. (*Reverse fold every time you make a fold - you don't want the card to know which way to go!*)
- Draw a line across the folded card, about a third of the way up from the fold - certainly no more than half way. Make two cuts, from the fold to the line.
- Fold up the section between the cuts, press firmly and reverse, press again, (*and reverse and press again if you wish*).
- Draw a line about half way up this rectangle and make a further two cuts - from the fold to the line.
- Fold up this small rectangle (*this will be more difficult*) - press - reverse - press - reverse - press.
- Now very carefully unfold everything. Hold the card with the original fold slightly angled and push each of the little 'box' folds inwards.
- Now fold the card right over and press down. It should look like the engine illustrated above.

Decorate the card how you will, but keep all the components vertical and only fasten them to the vertical surfaces of the engine. Then they will lie down when you ask them!

Once the basic design is more or less finished you can fold the card flat. Then see how big a cover you will need to enclose all the bits and pieces that will inevitably stick out.

As the engine is likely to be visible you can make it feature in the design. You can shape the two main sides if you wish - but don't go too near the cuts and folds!