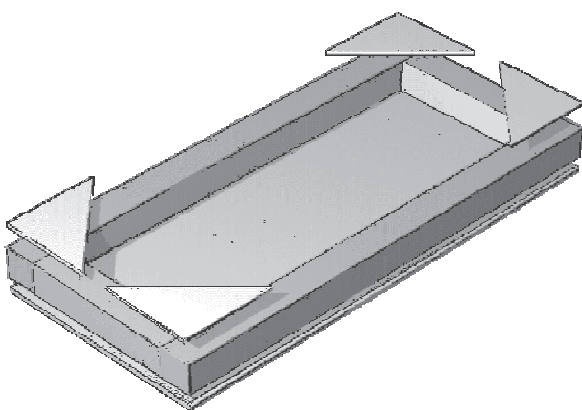


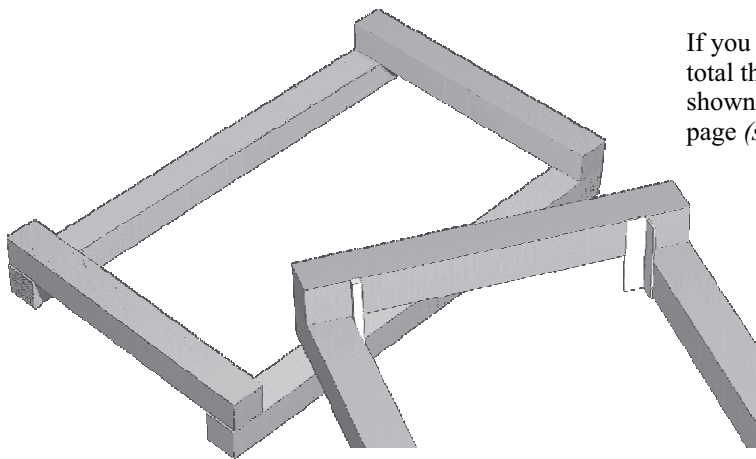
When one thinks of a frame suitable for primary schools the chances are that it is one built from four pieces of wood with eight card triangles reinforcing the corners. This is often called the 'Jinks' frame after the person who popularised it in the eighties. It works well in a variety of situations.

The advantages of this system are:

1. It works well for large frames, ie. with sides over 30cm long.
2. The thickness of the frame is little more than the thickness of one piece of wood.
3. Gluing end grain is avoided. *See page 16.*



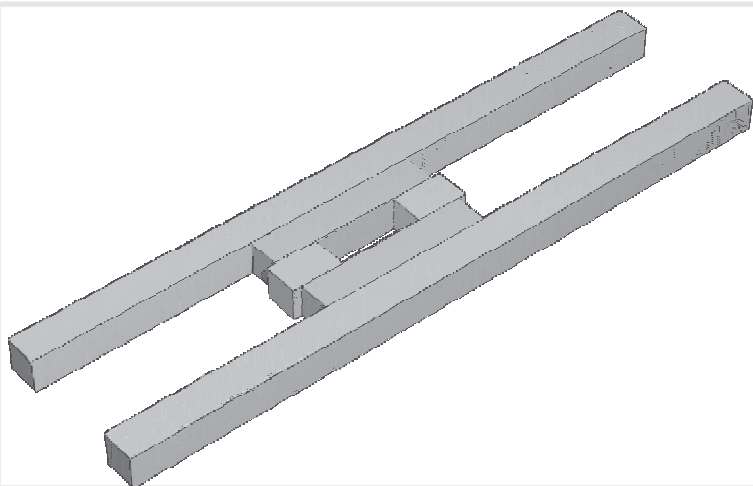
When making small frames, especially with younger children, it is easier to build the frame directly onto a pre-cut card rectangle. The lengths of wood can be cut to fit the card. You will still need to strengthen the top surface of each corner, however, so four card triangles will be needed.



If you use a strong wood glue, as we recommend, and if the total thickness of the frame is not important, gluing the sides as shown here is both easier, quicker and stronger.. Use yellow page (*see Page 16*) to help line up the angles.

For extra security it is possible to further strengthen each corner with either a short length of matchstick or a fold of thin card, as shown.

This method is ideal for use as a small vehicle chassis. Turned the other way up from the way it's shown here, you can glue a dowel in the angles so formed. If you do this though, leave out the small reinforcements mentioned above. They will get in the way.



The 'Broomlands' chassis

How about this arrangement for a small chassis? Very easy to make and perfect for lengths up to about 30cm. Building like this guarantees a frame that is flat and has parallel sides - and leaves spaces for central wheels or pulleys.